

HEALTH COVERAGE ENROLLMENT REPORT

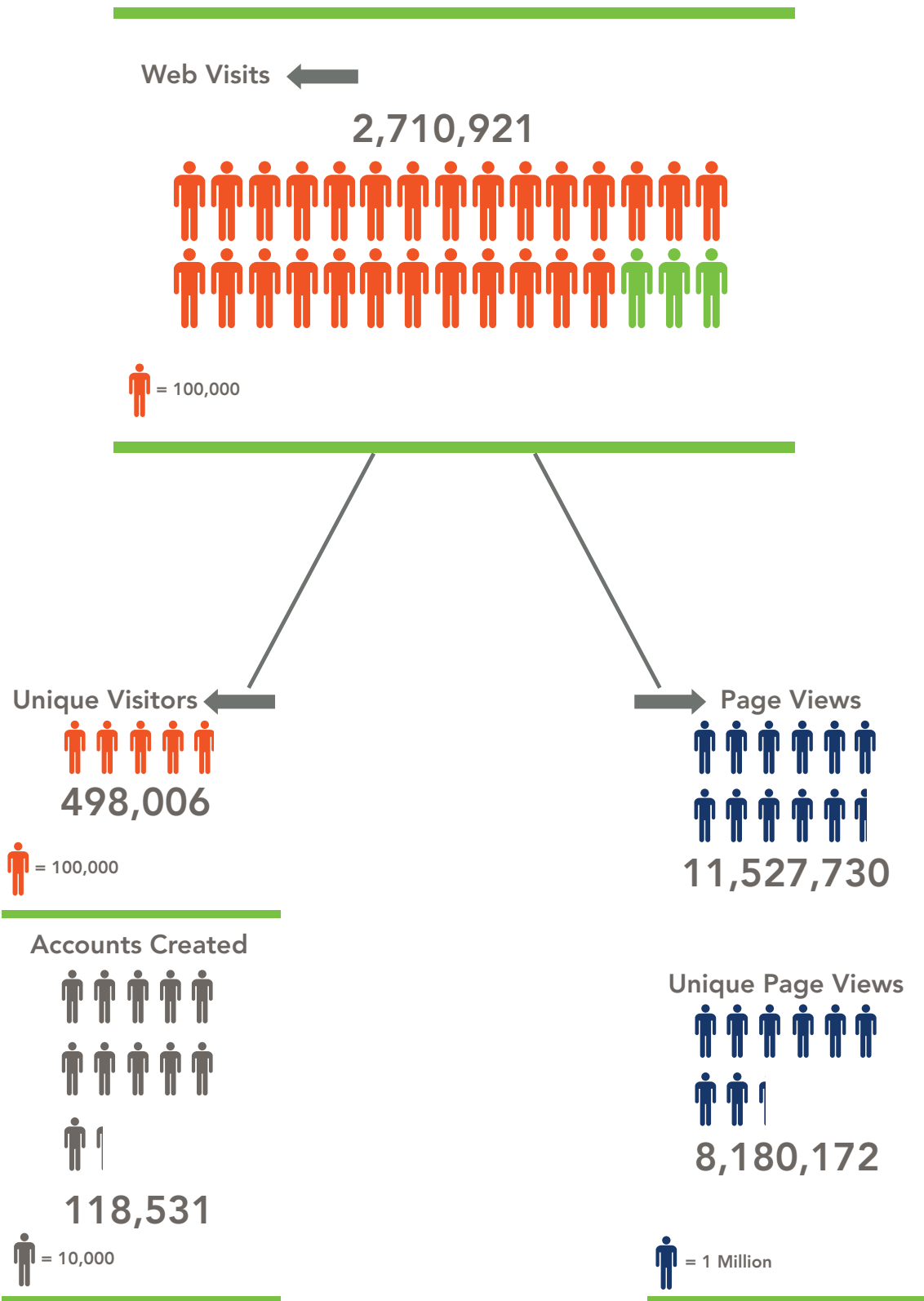
OCTOBER 2013

Table of Contents

Website Statistics.....	1
Enrollment Status of All Applications	2
Enrollment by County	3
Enrollment by Age.....	4
Enrollment by Metal Level	6
Enrollment by Gender.....	7
Family Size on Applications	8
Enrollments by Federal Poverty Level.....	9
Call Center Data	10

*This report represents data taken from Oct. 1, 2013 through Oct. 31, 2013.

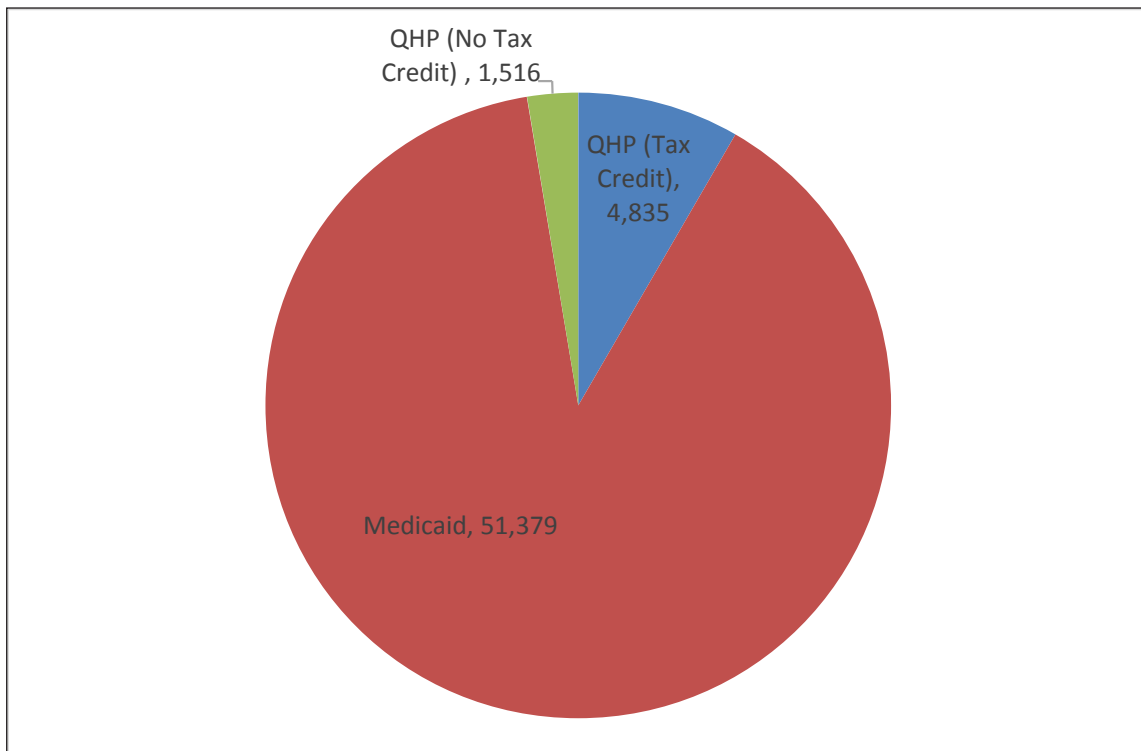
Website Statistics



Enrollment Status of Applications

Enrollments Completed

Enrolled in	Total
QHP (Tax Credit)	4,835
QHP (No Tax Credit)	1,516
Medicaid	51,379
Total	57,730



QHP – Tax Credit: Includes individuals who have purchased a qualified health plan (private health plan) that qualified for a tax credit to lower their monthly insurance premiums.

QHP – No Tax Credit: Includes individuals who purchased a qualified health plan that either did not qualify for a tax credit or did not apply for financial help.

Medicaid: Includes Individuals who have qualified and enrolled in a Medicaid Plan.

In Process Applications

Application Status	Total
QHP (Need To Pay)	21,671
In Process	72,136
Total	93,807

QHP (Need to Pay): Includes individuals who have completed an application for a Qualified Health Plan that is awaiting payment due by Dec. 23, 2013 for coverage that begins on Jan. 1, 2014.

In Process: Includes individuals who have started applications or completed applications that need to be finalized.

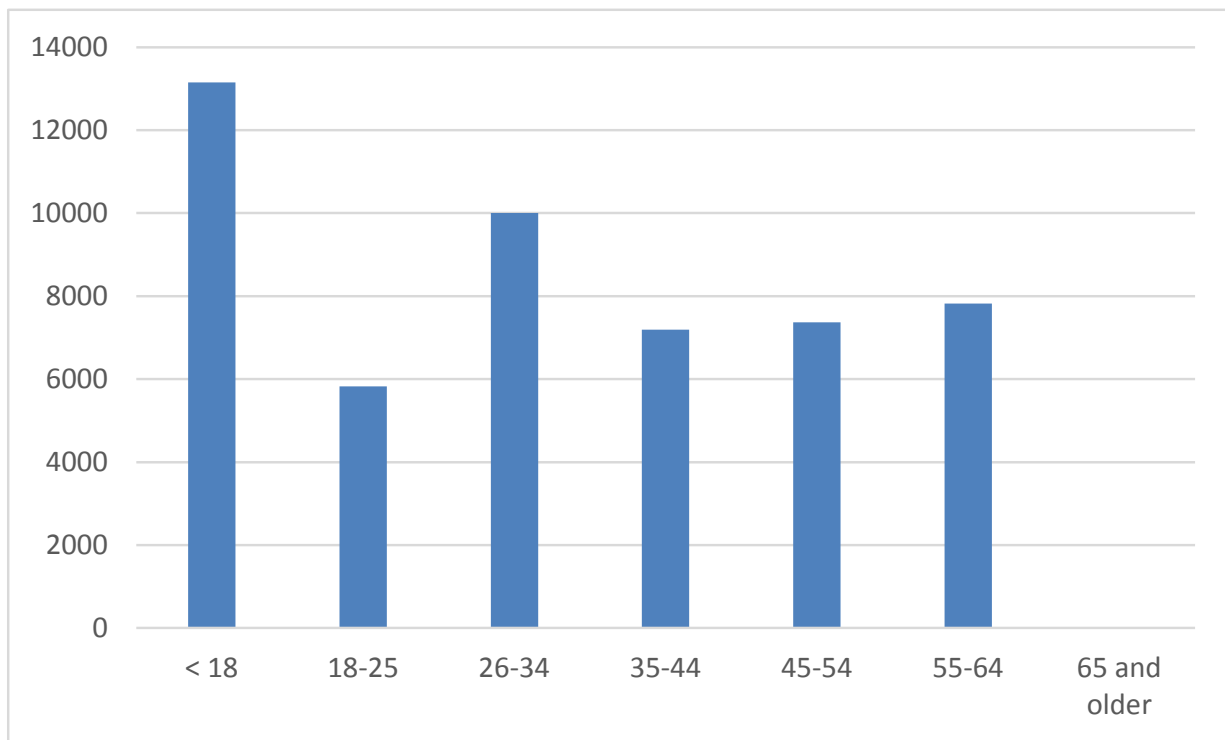
Enrollment by County

COUNTY	QHP (Tax Credit)	QHP (No Tax Credit)	Medicaid*	% of Total Enrolled
KING	1,271	581	12,647	25.1%
PIERCE	420	100	5,786	10.9%
SPOKANE	384	101	5,415	10.2%
SNOHOMISH	452	142	4,401	8.7%
CLARK	291	71	3,402	6.5%
THURSTON	216	54	2,066	4%
WHATCOM	234	53	1,977	3.9%
Yakima	101	28	1,902	3.5%
KITSAP	181	51	1,754	3.4%
BENTON	94	35	1,249	2.4%
COWLITZ	57	15	1,031	1.9%
SKAGIT	118	31	912	1.8%
CLALLAM	145	39	691	1.5%
CHELAN	76	19	669	1.3%
LEWIS	66	10	671	1.3%
ISLAND	88	29	609	1.3%
FRANKLIN	46	12	617	1.2%
MASON	47	17	590	1.1%
GRAYS HARBOR	54	9	555	1.1%
GRANT	33	4	485	0.9%
JEFFERSON	69	22	424	0.9%
KITTITAS	40	15	443	0.9%
STEVENS	41	4	408	0.8%
OKANOGAN	48	18	379	0.8%
WALLA WALLA	30	15	337	0.7%
DOUGLAS	31	11	313	0.6%
PACIFIC	68	9	222	0.5%
WHITMAN	18	1	263	0.5%
SAN JUAN	38	6	210	0.4%
KLICKITAT	17	5	202	0.4%
ADAMS	9	1	162	0.3%
ASOTIN	11	4	153	0.3%
PEND OREILLE	9	1	127	0.2%
LINCOLN	5	2	80	0.2%
SKAMANIA	8	1	61	0.1%
WAHKIAKUM	10	0	56	0.1%
FERRY	3	0	49	0.1%
COLUMBIA	5	0	38	0.1%
GARFIELD	1	0	12	0.1%
Total	4,835	1,516	51,368	57,719

*Medicaid enrollment includes 11 additional enrollees in "Other" County.

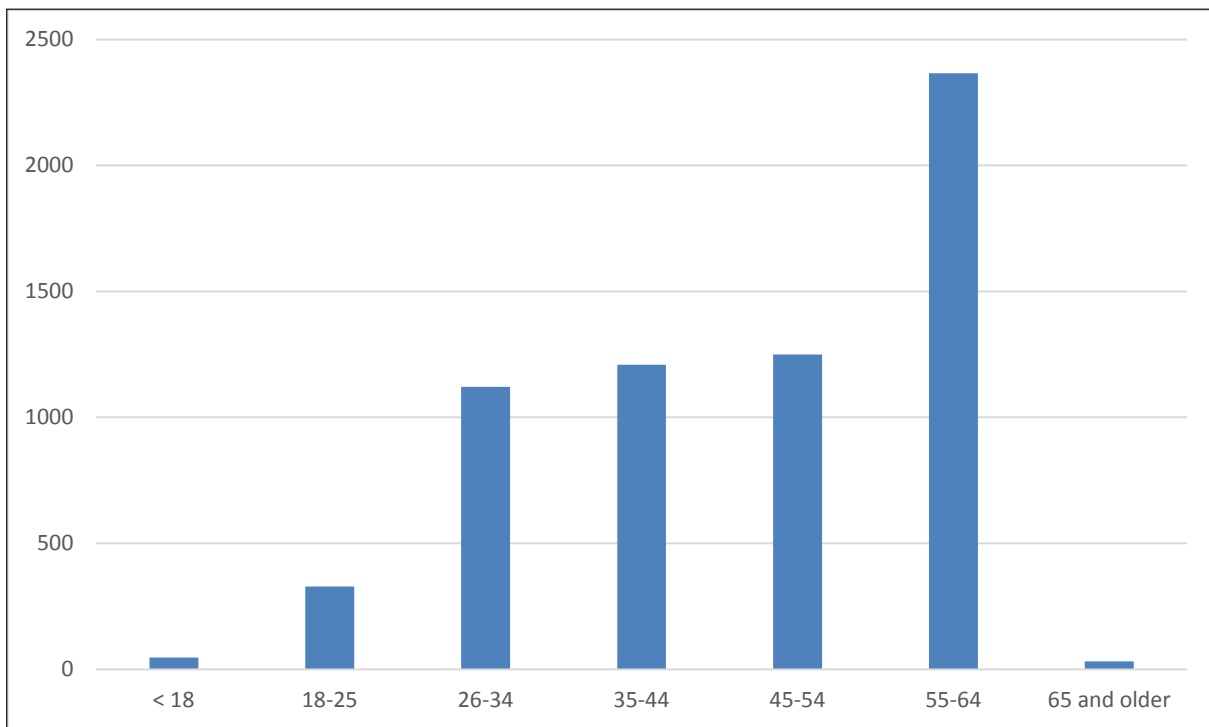
Medicaid Enrollment by Age

AGE	Enrollment	Percentage
< 18	13,152	25.59%
18-25	5,828	11.34%
26-34	10,006	19.47%
35-44	7,196	14.01%
45-54	7,372	14.34%
55-64	7,820	15.22%
65 and older	4	.03%
Total	51,379	100%



Qualified Health Plan Enrollment by Age

AGE	Enrollment	Percentage
< 18	46	.7%
18-25	328	5.16%
26-34	1,121	17.64%
35-44	1,209	19.03%
45-54	1,250	19.68%
55-64	2,366	37.25%
65 and older	31	.488%
Total	6,351	100%



Note: Individuals who are eligible for Medicare are not eligible to enroll in health insurance coverage through Washington Healthplanfinder. Some individuals over the age of 65 may enroll through Washington Healthplanfinder if they are not eligible for Medicare.

Enrollment by Metal Level

Metal Level	Enrollment	Percentage
Bronze	1,306	20.56%
Catastrophic	5	0.09%
Gold	1,002	15.77%
Silver	4,038	63.58%
Total	6,351	100%

Gold Plans:

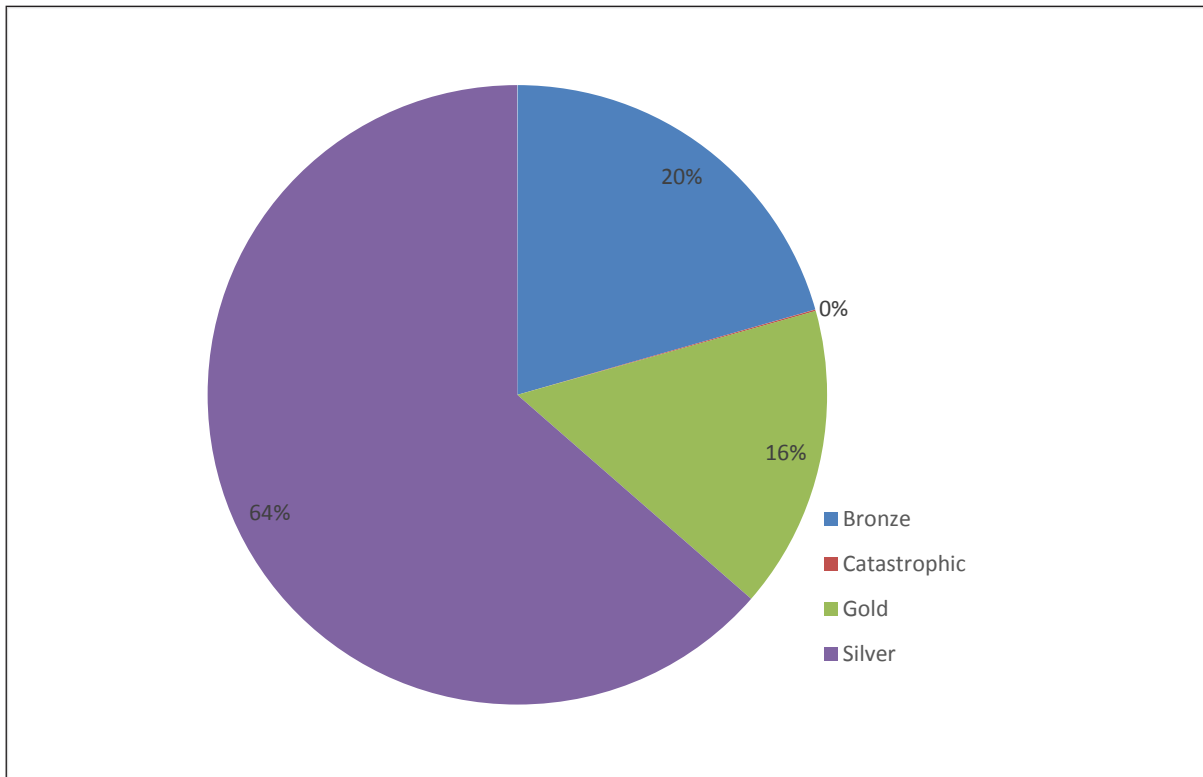
Cover 80 percent of the cost of essential health benefits, while the patient pays 20 percent.

Silver Plans:

Cover 70 percent of the cost of essential health benefits, while the patient pays 30 percent.

Bronze Plans:

Cover 60 percent of the cost of essential health benefits, while the patient pay 40 percent.

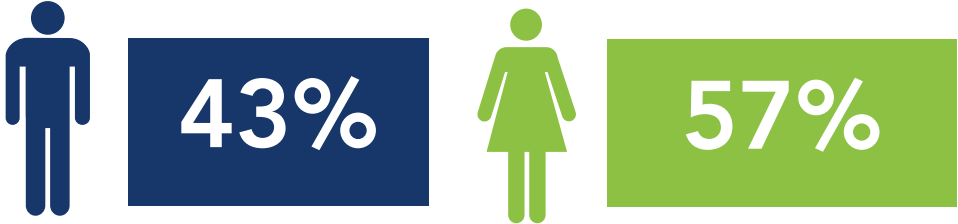


Note: Health insurance carriers in Washington did not submit any "Platinum" plans for regulatory approval to be offered in Washington Healthplanfinder.

Enrollment by Gender

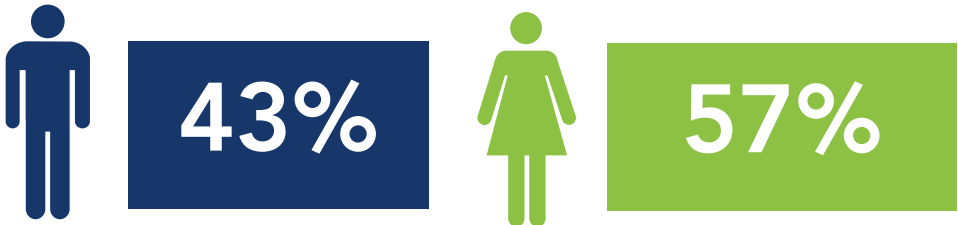
Medicaid Enrollments by Gender

Gender	Enrollment
Male	22,257
Female	29,122
Total	51,379



Qualified Health Plan Enrollments by Gender

Gender	Enrollment
Male	2,716
Female	3,635
Total	6,351



Family Size on Applications

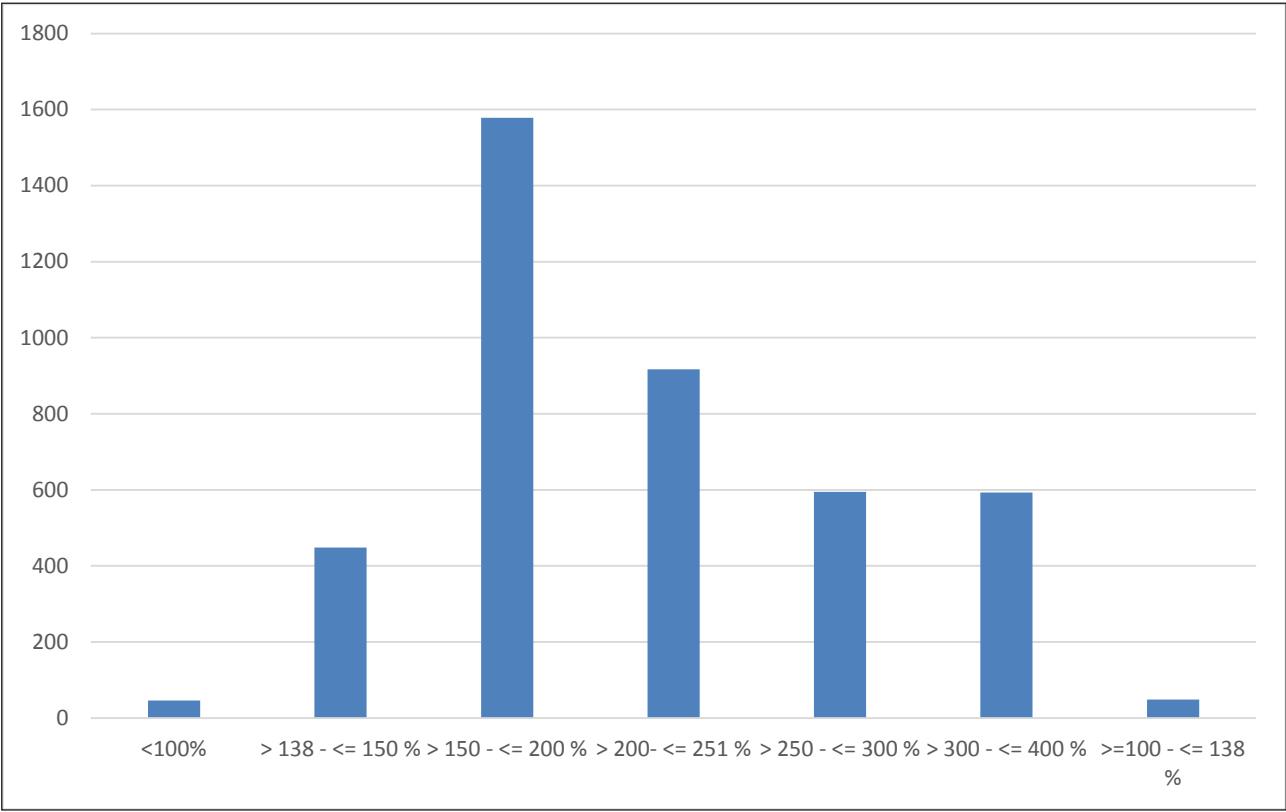
Household Members	Applications
1	28,482
2	5,782
3	1,731
4	1,036
5	424
6	167
7	46
8	16
9	7
10	4
11	3
Total	37,698

Note: Health insurance carriers in Washington did not submit "Platinum" plans for regulatory approval to be offered in Washington Healthplanfinder.

The total applications on this chart includes applications for individuals who are fully enrolled.

Enrollments by Federal Poverty Level

FPL	Enrollment
<100%	46
> 138 - <= 150 %	448
> 150 - <= 200 %	1578
> 200- <= 251 %	917
> 250 - <= 300 %	595
> 300 - <= 400 %	593
>=100 - <= 138 %	49



Call Center Data

Call Center	Total
Total Call Volume	91,722
Average Talk Time	12 minutes, 51 seconds*
Total Spanish Language Calls	7,197
Total Calls for other Languages other than Spanish and English	3,115

*Since Oct. 14 the average talk time averaged approximately 18 minutes per call.

Note: Data for enrollments through the toll-free Customer Support Center are not yet available.