

CEO Remarks

Exchange Board Meeting
July 23 – 24, 2025



Ingrid Ulrey, she/her
Chief Executive Officer
Ingrid.Ulrey@wahbexchange.org
206-330-6531

Board Support and Engagement



All Staff Picnic July 16, 2025



Theme - Navigating Federal Change



Destination is the same

New obstacles on the way

Longer journey to true north

Time to re-route

Prepare for a swift / successful rebound

Federal Change – Current Waves

Marketplace Rule

Finalized June 2025

HR1 - Reconciliation

Passed July 2025

Enhanced Tax Credits

Expires December 2025

Fewer people eligible for coverage

Harder to get and stay covered

Higher premiums and overall costs

Federal Change – Combined Impact



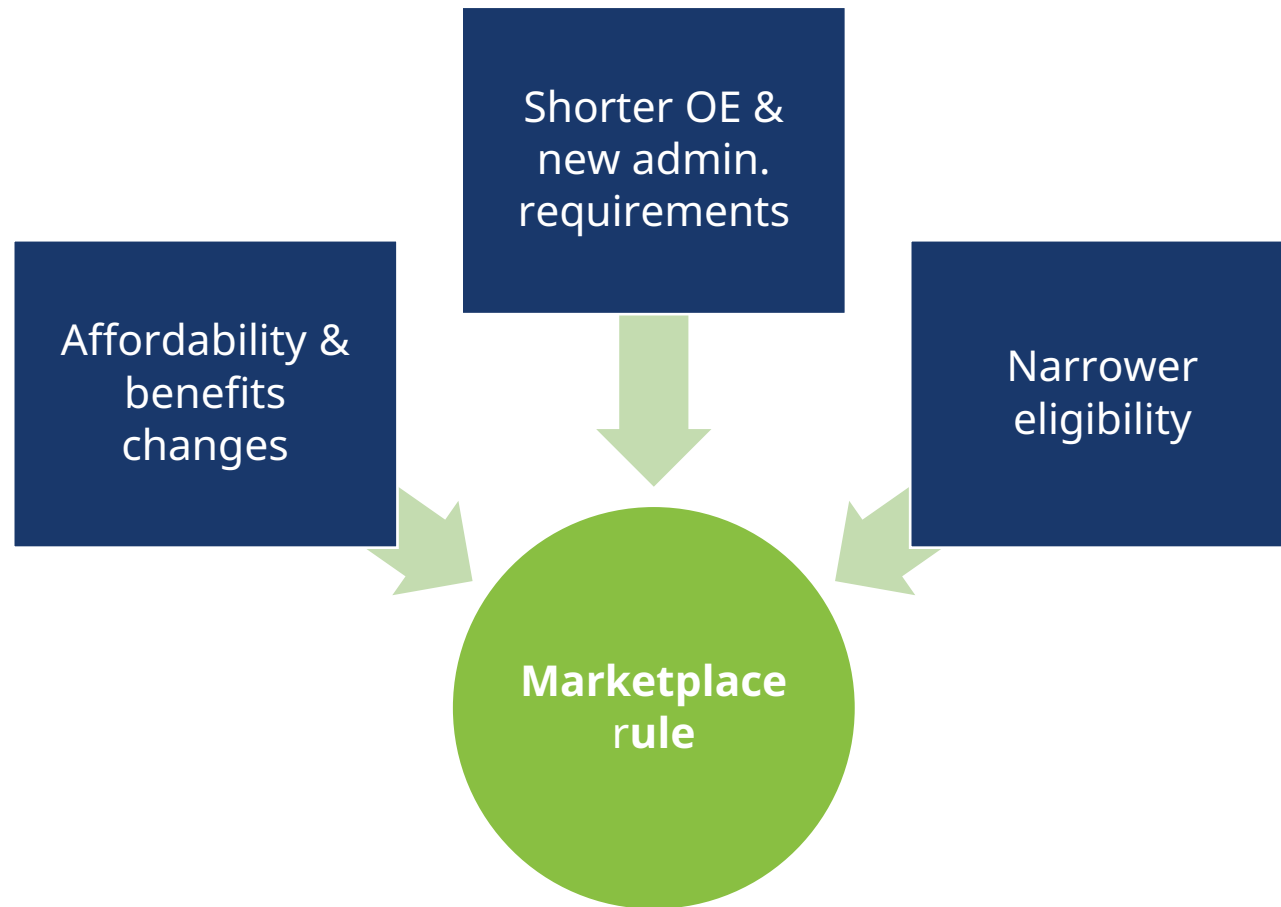
Estimated combined impact in Washington

Enrollment reduction of **35%-50%**

Premium increases of **up to 15%**

Ripple effects across the health care system predicted **100M+** increase in uncompensated hospital care

Marketplace rule – policies & impacts



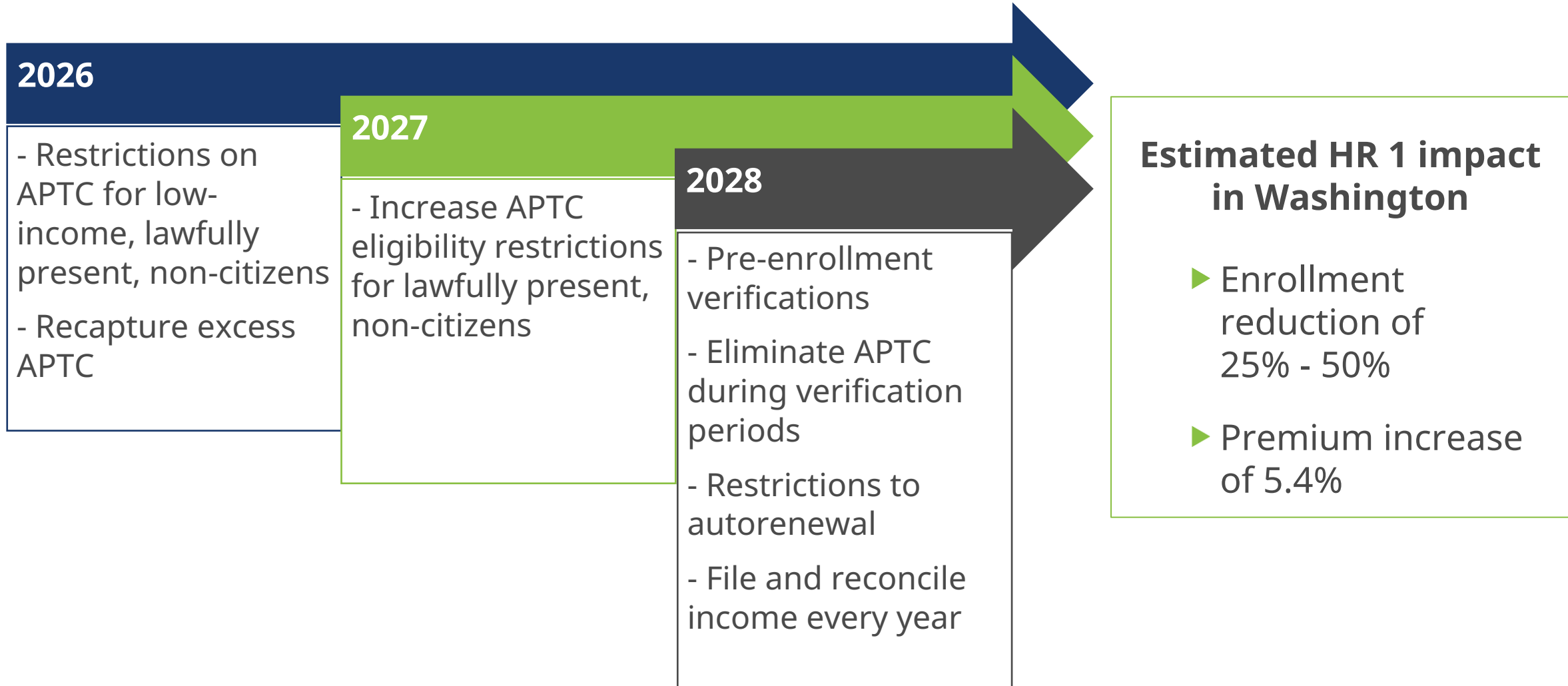
Estimated rule impact in Washington

- ▶ Enrollment reduction up to 23%
- ▶ Premium increase by 4.5%

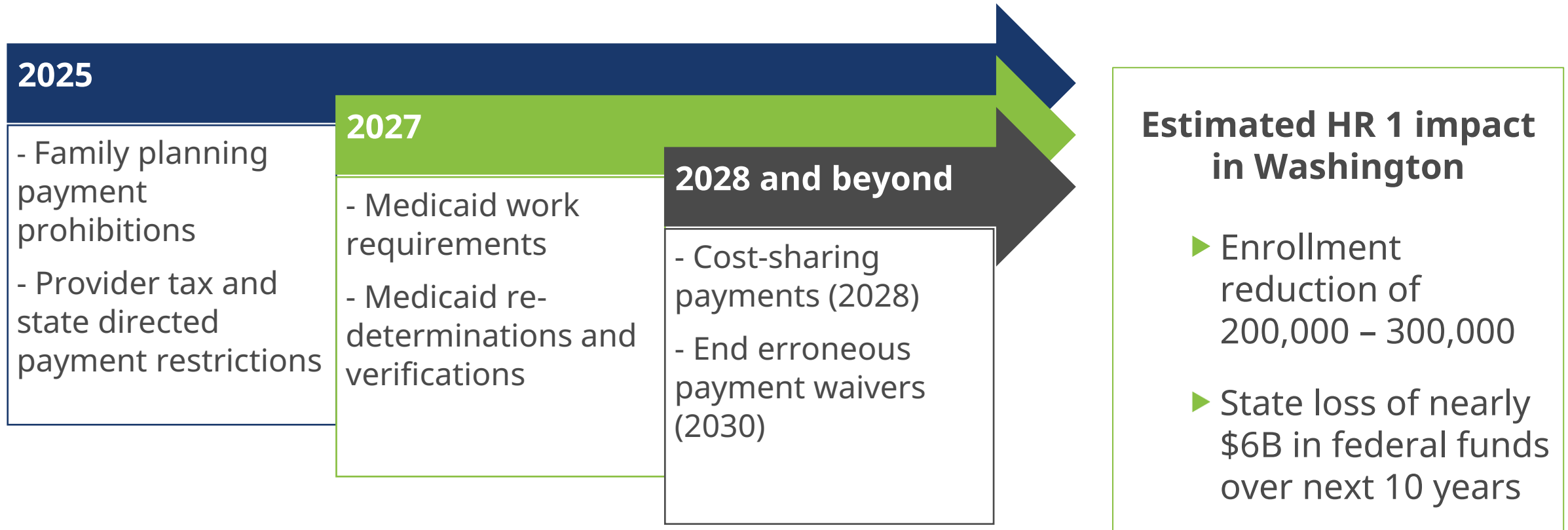


Most implementation is paused due to pending litigation

HR 1 – Marketplace policies & impacts

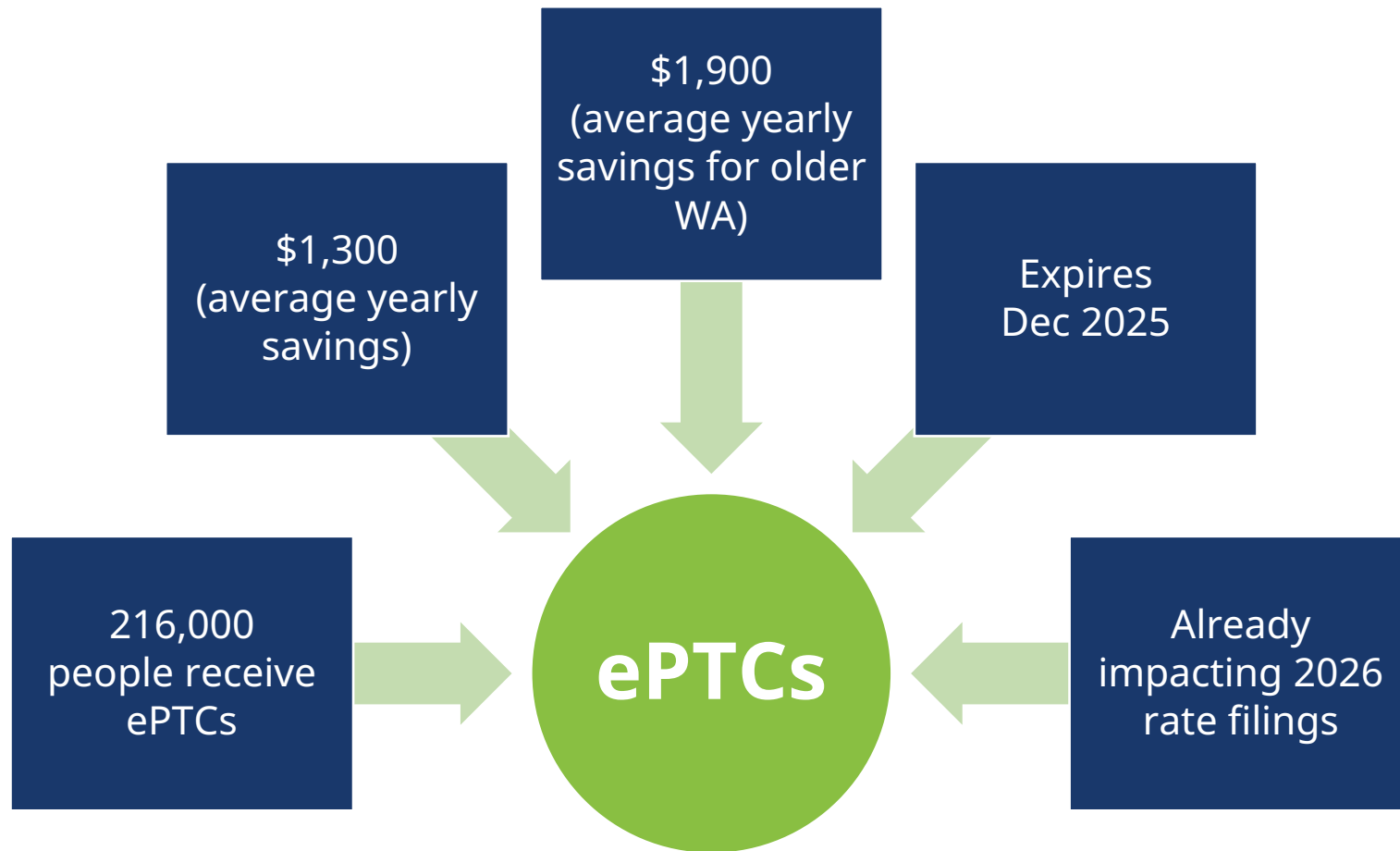


HR 1 – Medicaid policies & impacts



See [HCA report](#) for more details

Enhanced tax credits – overview & impacts



Estimated ePTCs expiration impact in Washington

- ▶ Enrollment reduction of 80,000
- ▶ Average net premium increases by 65%
- ▶ Loss of \$285M in federal funds (tax credits)

Federal Policy – Organizational Response

Implementation

- Policy analysis of new requirements
- System and process changes
- Staff, partner and customer communications

Mitigation

- Silver loading / premium alignment
- Cascade Care Savings
- WA Health Pathways

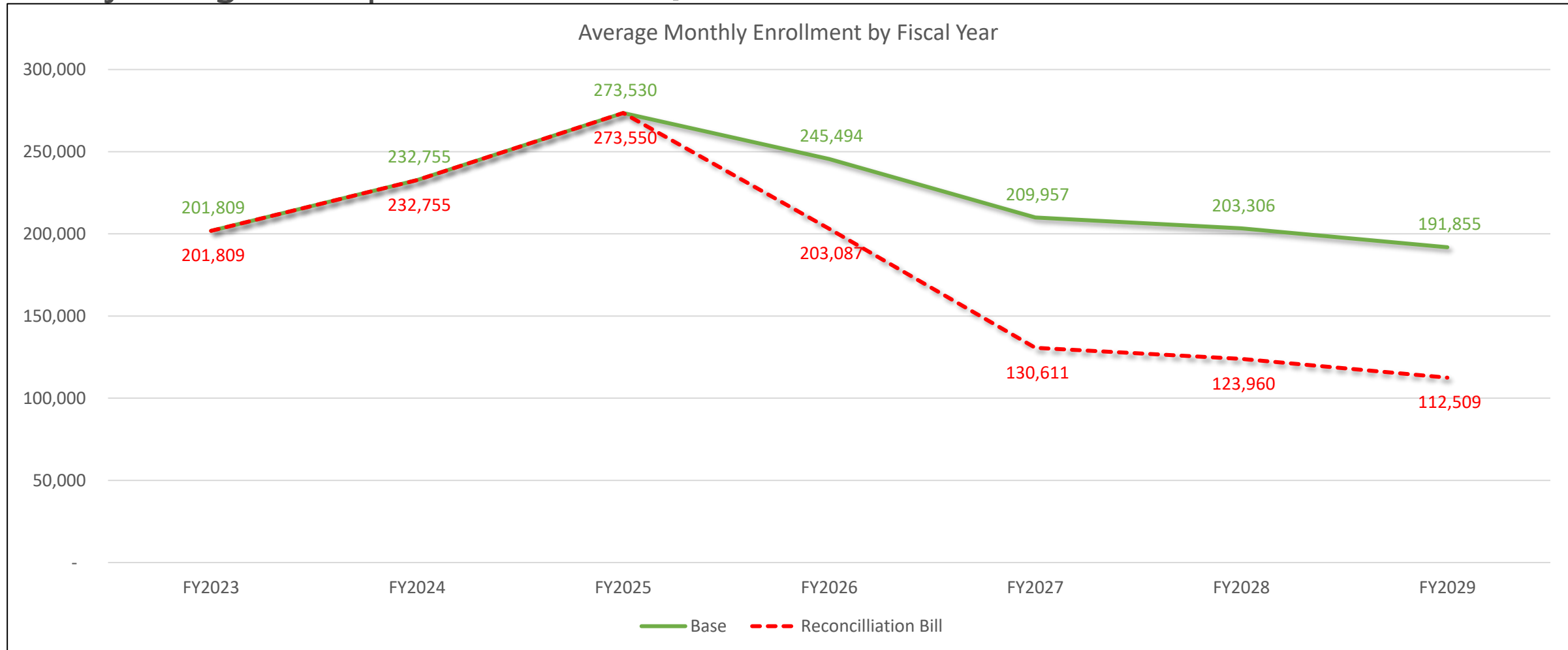
Prioritization

- Balancing new demands and other essential priorities
- Leveraging portfolio planning
- Projecting fiscal impacts



Federal Reconciliation Bill: Enrollment Impacts

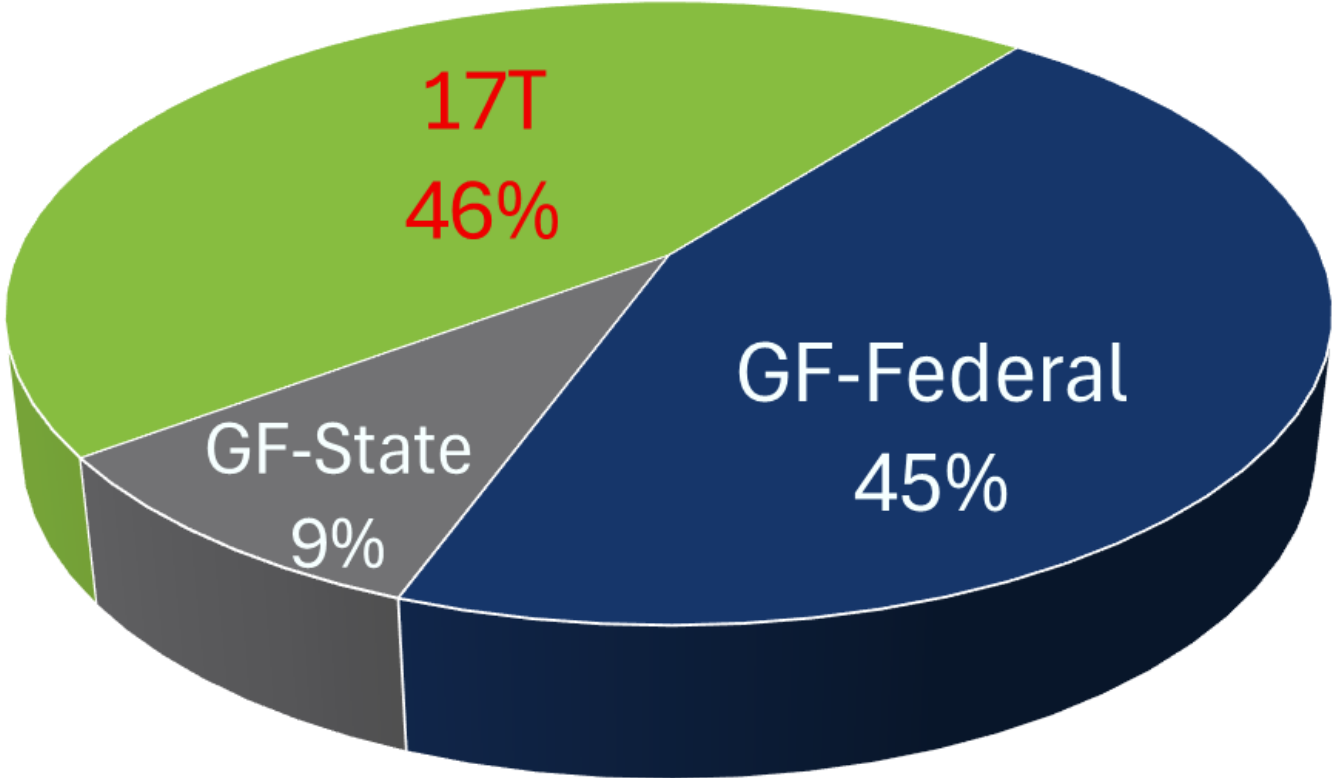
Projecting a steep reduction in QHP enrollment



Compared to Wakley's February 2025 Qualified Health Plans (QHP) forecast

HBE Operating Fund Sources

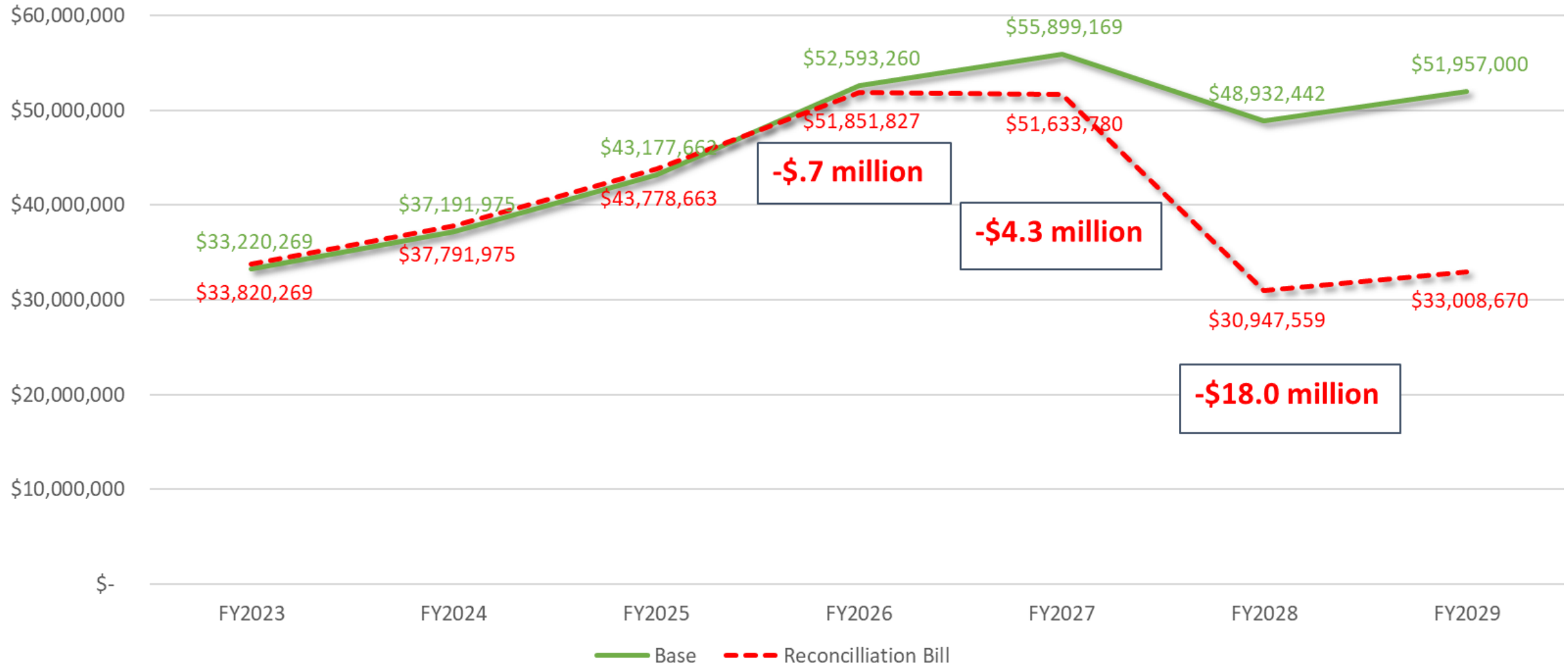
2025-27 Biennium Operating Funds



■ GF-State ■ 17T ■ GF-Federal

HBE Revenue Projection - 17T

Anticipated 17T Revenue Collected per Fiscal Year
Base vs Reconciliation



DRAFT Strategic Priorities for the FY 2025-27 Biennium

MISSION



Build
Organizational
Resilience

Secure &
Modernize
Technology
Systems

Support Our
Customers

Keep People
Covered

Position for
the Future

EQUITY





washington
healthplanfinder

click. compare. covered.

www.wahealthplanfinder.org

| www.wahbexchange.org

| 1-855-923-4633